

Modular Cooking Range Line 700XP Sink Top with Water Column, 400 mm

ITEM # _____

MODEL # _____

NAME # _____

SIS # _____

AIA # _____



371214 (E7SUNDQ000)

Sink Top with water column,
1/2 module

Short Form Specification

Item No. _____

730mm deep unit with 1,5mm thick AISI 304 stainless steel worktop and exterior panels in Stainless Steel with Scotch Brite finishing.

AISI 304 well, 1mm-thick and 150mm deep with GN 1/1 dimensions. Features tap with hot and cold water knobs and right-angled side edges to allow flush fitting joints between units, eliminating gaps and possible dirt traps.

Main Features

- Tap with hot and cold water knobs.
- Well with GN1/1 dimension, 150mm deep.
- Top configuration allows installation on ambient base only (not possible to install on refrigerated nor freezer base).
- Suitable for countertop installation.

Construction

- Unit is 730mm deep to give a larger working surface area
- AISI 304 stainless steel worktop, 1,5mm thick.
- AISI 304 well, 1mm-thick.
- Model has right-angled side edges to allow flush fitting joints between units, eliminating gaps and possible dirt traps.
- All exterior panels in Stainless Steel with Scotch Brite finishing.

Optional Accessories

- | | |
|--|-------------------------------------|
| • Junction sealing kit | PNC 206086 <input type="checkbox"/> |
| • Support for bridge type installation, 800mm | PNC 206137 <input type="checkbox"/> |
| • Support for bridge type installation, 1000mm | PNC 206138 <input type="checkbox"/> |
| • Support for bridge type installation, 1200mm | PNC 206139 <input type="checkbox"/> |
| • Support for bridge type installation, 1400mm | PNC 206140 <input type="checkbox"/> |
| • Support for bridge type installation, 1600mm | PNC 206141 <input type="checkbox"/> |
| • Support for bridge type installation, 400mm | PNC 206154 <input type="checkbox"/> |
| • Chimney upstand, 400mm | PNC 206303 <input type="checkbox"/> |
| • Right and left side handrails | PNC 206307 <input type="checkbox"/> |
| • Back handrail 800 mm | PNC 206308 <input type="checkbox"/> |
| • Chimney grid net, 590mm (700XP/900) | PNC 206403 <input type="checkbox"/> |
| • Frontal handrail, 400mm | PNC 216046 <input type="checkbox"/> |
| • Frontal handrail, 800mm | PNC 216047 <input type="checkbox"/> |
| • Frontal handrail, 1200mm | PNC 216049 <input type="checkbox"/> |
| • Frontal handrail, 1600mm | PNC 216050 <input type="checkbox"/> |
| • Large handrail - portioning shelf, 400mm | PNC 216185 <input type="checkbox"/> |
| • Large handrail - portioning shelf, 800mm | PNC 216186 <input type="checkbox"/> |
| • 2 side covering panels for top appliances | PNC 216277 <input type="checkbox"/> |

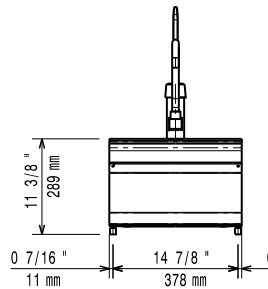
APPROVAL: _____



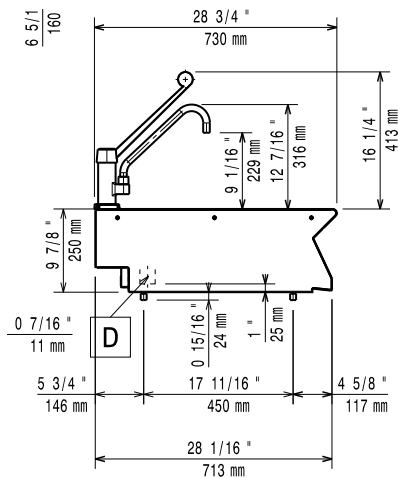
Electrolux
PROFESSIONAL

Modular Cooking Range Line 700XP Sink Top with Water Column, 400 mm

Front

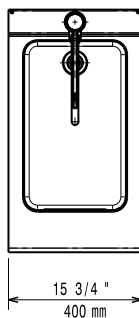


Side



- CWI1 = Cold Water inlet 1 (cleaning)
D = Drain
HWI = Hot water inlet

Top



Water:

Water cold/hot pipe size 1/2"

Key Information:

External dimensions, Width: 400 mm

External dimensions, Depth: 730 mm

External dimensions, Height: 250 mm

Net weight: 10 kg